



GAT MONTHLY MEMBERSHIP PROGRESS REPORT

Results as of: 5/31/2021

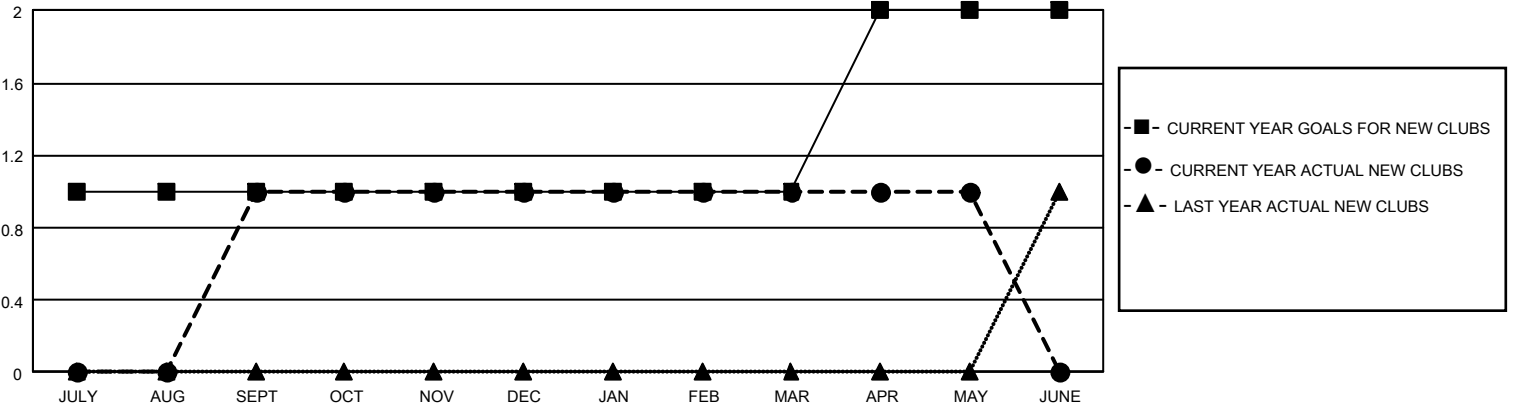
GAT Constitutional Area 5 - China

REPORT DOES NOT INCLUDE CLUBS IN UNDISTRICTED AREAS.

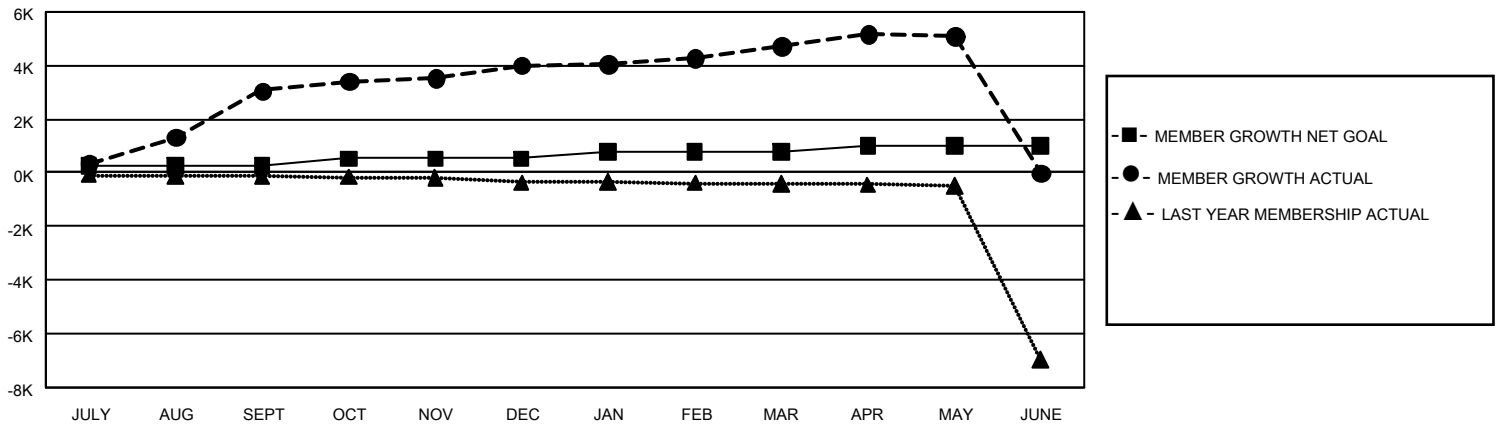
Clubs			
RESULTS FOR 2020-2021			
QUARTER	NEW CLUB GOAL	NEW CLUBS	DROPPED CLUBS
JULY/AUG/SEPT	3	1	4
OCT/NOV/DEC	0	0	0
JAN/FEB/MAR	0	0	5
APR/MAY/JUNE	3	0	0

Members			
RESULTS FOR 2020-2021			
QUARTER	MEMBER GROWTH NET GOAL	MEMBER GROWTH ACTUAL	DROPPED MEMBERS ACTUAL (including transfers)
JULY/AUG/SEPT	273	4,039	583
OCT/NOV/DEC	253	1,517	336
JAN/FEB/MAR	263	996	217
APR/MAY/JUNE	223	796	261

GOALS AND ACTUAL NEW CLUBS CUMULATIVE



GOALS AND ACTUAL MEMBERS CUMULATIVE



DROPPED CLUBS: 9	1,118 CLUBS OF 1,361 ADDED 1 OR MORE NEW MEMBERS	<u>GENDER DISTRIBUTION</u>	
<u>DROPPED MEMBERS</u>		MALE	22,665 (62.30%)
DECEASED	25	FEMALE	13,715 (37.70%)
CLUB CANCELLED	42	TOTAL FAMILY UNIT MEMBERS	
OTHER	1,329	2,393	
TOTAL	1,396	FAMILY MEMBERS PAYING HALF DUES	
		1,232	

[CLICK HERE FOR CUMULATIVE MEMBERSHIP DATA](#)